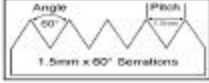


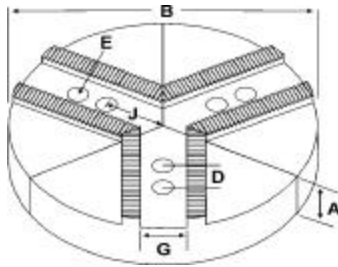
ROUND JAWS- 1.5 mm x 60° Serrations

For Use On: Kitagawa, MMK, Howa, SMW Autoblok, Strong & Hitachi-Seiki Chucks

Chuck Jaws
Jaw Nuts



Group



- Round Jaws allow for complete gripping of workpiece.
- Oversized jaws available.
- Ideal for thin-walled or irregular shaped workpieces.
- Can be machined to fit workpiece.
- Available in Aluminum, Cast Iron & Steel.
- Made in the USA.



Power Chucks
KURT Vises

Retention Knobs
ER,DA,TG,AF Collets

Balanced Toolholders
VDI/Lathe Bushings

Indexable Drills
Turning & Boring

Endmills
Carbide & HSS

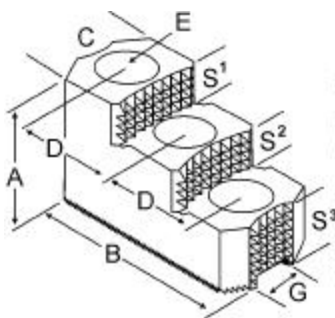
Drills & Taps
Reamers/Broaches

Measuring Tools
Abrasives

Group No.	Chuck Size	Critical Dimensions				Pie Dia B	Hght Inch A	No. of Holes	ALUMINUM		CAST IRON		STEEL	
		Groove Width G	Screw Size E	Hole Space D	Hole to Front J				Part Number	Price Set Of 3	Part Number	Price Set Of 3	Part Number	Price Set Of 3
K1-11-20	6	0.433 (11mm)	10mm	0.787 (20mm)	1.625	6	2.00	2	RHO-6200A	69.10	RHO-6200CI	89.60	RHO-6200S	161.92
							3.00	2	RHO-6300A	94.14	RHO-6300CI	140.79	RHO-6300S	206.08
							4.00	2	RHO-6400A	108.34	RHO-6400CI*	153.59	RHO-6400S	250.24
K1-11-25	6	0.433 (11mm)	8mm	0.985 (25mm)	1.625	6	2.00	2	8-RHO-6200A	103.98	8-RHO-6200CI	115.20	-	-
							4.00	2	8-RHO-6400A	145.57	8-RHO-6400CI	217.59	-	-
							2.00	2	RSG-6200A	69.10	RSG-6200CI	89.60	RSG-6200S*	161.92
K1-12-20	6	0.472 (12mm)	10mm	0.787 (20mm)	1.625	6	3.00	2	RSG-6300A	94.14	RSG-6300CI	140.79	RSG-6300S	206.08
							4.00	2	RSG-6400A	108.34	-	-	RSG-6400S	250.24
							2.00	2	8-RSG-6200A	103.98	8-RSG-6200CI	115.20	8-RSG-6200S	235.52
K1-14-20	6	0.551 (14mm)	10mm	0.790 (20mm)	1.625	6	4.00	2	8-RSG-6400A	145.57	8-RSG-6400CI	217.59	-	-
							2.00	2	10-RSG-6200A	136.45	-	-	-	-
							2.00	2	RKT-6200A	63.12	RKT-6200CI	89.60	RKT-6200S	161.92
K1-12-20	6	0.472 (12mm)	10mm	0.787 (20mm)	1.625	8	3.00	2	RKT-6300A	94.14	RKT-6300CI	140.79	RKT-6300S	206.08
							4.00	2	RKT-6400A	97.89	-	-	RKT-6400S	250.24
							2.00	2	8-RKT-6200A	96.32	8-RKT-6200CI	115.20	8-RKT-6200S	235.52
K1-14-20	6	0.551 (14mm)	10mm	0.790 (20mm)	1.625	6	4.00	2	8-RKT-6400A	130.77	8-RKT-6400CI	217.59	-	-
							2.00	2	RNK-6200A	69.10	RNK-6200CI	89.60	RNK-6200S	161.92
							3.00	2	RNK-6300A	94.14	RNK-6300CI	140.79	RNK-6300S	170.66
K1-14-20	6	0.551 (14mm)	10mm	0.790 (20mm)	1.625	6	4.00	2	RNK-6400A	108.34	-	-	RNK-6400S	207.23

Round Jaw Material: ALUMINUM-6061-T6 Bar Stock, CAST IRON-Gray, STEEL-1018
For complete list of applicable chucks, see pages 54-66.* denotes non-stock item. Please allow 1 week manufacturing time.

HARD JAWS



- Designed for first operation roughing, standard runout between 0.005-0.010
- 1 & 2 step jaws available.
- Reversible-suitable for OD & ID workholding.
- OEM Style have ground tips and provide improved runout.
- Extra Bite have conical teeth for extra gripping power and black oxide for long life. Made in the USA.

Standard runout between 0.005-0.010

Japanese OEM Style

American "Extra Bite™"



Group No.	Kitagawa	MMK Matsumoto	Chuck Size	Critical Dimensions			Width Inch C	Length Inch B	Hght Inch A	No. of Holes	No. of Steps	Step Height S1	Step Height S2	Step Height S3	Part Number	Price Set Of 3
				Groove Width G	Screw Size E	Hole Space D										
K1-11-20	-	-	6	0.433 (11mm)	10mm	0.787 (20mm)	1.250	2.900	2.000	3	2	0.500	0.500	1.000	HO-60HJ2	352.00
K1-11-25	-	Z-6,ZA5-6-0, ZA5-6B	6	0.433 (11mm)	8mm	0.985 (25mm)	1.250	2.900	2.000	3	2	0.500	0.500	1.000	SG-60HJ2	301.65
K1-12-20	BB-06,B-06, B-206,BT-06 & other 6" Kitagawa Chucks	-	6	0.472 (12mm)	10mm	0.787 (20mm)	1.220	2.646	1.423	3	1	0.359	-	1.064	KT-60HJ1-U	284.63
								2.729	1.739	3	2	0.389	0.389	0.945	KT-60HJ2-U	251.74
								2.900	2.000	3	1	0.500	-	1.000	KT-60HJ1	299.00
								2.900	2.000	3	2	0.500	0.500	1.000	KT-60HJ2	299.00

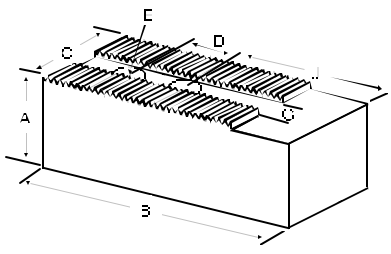
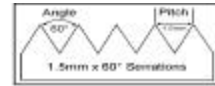
"-U" Hard Jaws are OEM Style.

Call Us Today For All Of Your Machine Tool Needs!

SOFT JAWS- 1.5 mm x 60° Serrations

C

For Use On: Kitagawa, MMK, Howa, SMW Autoblok, Strong & Hitachi-Seiki Chucks



- Supplies maximum concentricity on finish turning operations.
- Can be bored or turned to fit workpiece.
- Steel jaws can be hardened.
- Available pointed for smaller diameter parts.
- Special orders available
- Available in Aluminum, Steel & Aircraft Aluminum.



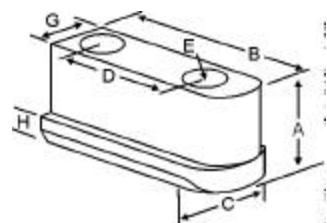
Group
K1

QUANTITY DISCOUNTS!
Order **5 SETS OR MORE** of the same part number soft jaws and receive a **5% DISCOUNT!**

Group No.	Chuck Size	Critical Dimensions			Hole to Front J	Width Inch C	Length Inch B	Hght Inch A	No. of Holes	ALUMINUM		STEEL			
		Groove Width G	Screw Size E	Hole Space D						FLAT END Part Number	Price Set Of 3	FLAT END Part Number	Price Set Of 3		
K1-11-20	6	0.433 (11mm)	10mm	0.787 (20mm)	1.625	1.250	3.000	1.500	2	HO-6150AF	33.22	HO-6150F	35.65		
								2.000	2	HO-6200AF	38.25	HO-6200F	40.94		
								2.500	2	HO-6250AF	46.06	HO-6250F	49.28		
								3.000	2	HO-6300AF	54.57	HO-6300F	58.39		
K1-11-25	6	0.433 (11mm)	8mm	0.985 (25mm)	1.625	1.000	3.000	1.500	2	SG-6150AF	33.15	SG-6150F	35.65		
								2.500	2	SG-6250AF	45.93	SG-6250F	49.28		
								3.000	2	SG-6300AF	50.24	SG-6300F	51.28		
								1.250	3.000	1.500	2	SG-6152AF	37.29	SG-6152F	40.05
K1-12-20	6	0.472 (12mm)	10mm	0.787 (20mm)	1.625	1.250	3.000	1.000	2	KT-6100AF	31.45	KT-6100F	33.86		
								1.500	2	KT-6150AF	33.22	KT-6150F	21.26		
								1.500	2	KT-6150BF	45.82	-	-		
								2.000	2	KT-6200AF	40.14	KT-6200F	25.10		
								2.000	2	KT-6200BF	57.79	-	-		
								2.500	2	KT-6250AF	46.06	KT-6250F	28.98		
								3.000	2	KT-6300AF	50.38	KT-6300F	32.86		
								3.000	2	KT-6300BF	63.99	-	-		
								3.500	2	KT-6350AF	65.19	KT-6350F	69.78		
								4.000	2	KT-6400AF	71.55	KT-6400F	76.56		
								1.250	3.000	1.500	2	KT-6152AF	61.66	KT-6152F	66.25
								3.000	2	KT-6302AF	71.77	KT-6302F	76.56		
K1-14-20	6	0.551 (14mm)	10mm	0.790 (20mm)	1.625	1.250	3.500	1.500	2	KT-6500AF*	145.25	KT-6500F*	157.58		
								1.500	2	KT-6151AF	39.12	KT-6151F	41.96		
								1.500	2	NK-6150AF	33.22	NK-6150F	35.65		
K1-14-20	6	0.551 (14mm)	10mm	0.790 (20mm)	1.625	1.250	3.000	1.500	2	NK-6250AF	46.06	NK-6250F	49.28		
								2.500	2	NK-6250AF	46.06	NK-6250F	49.28		

For "Pointed" Soft Jaws, please substitute "P" for "F" in the part number. Example: HO-6200AF will be HO-6200AP. Add \$3.25 For Pointed Jaws
Soft Jaw Material: ALUMINUM-6061-T6 Bar Stock, STEEL-1018 or 1050, "B" JAWS-7075-T6 Aircraft Aluminum
For complete list of applicable chucks, see pages 54-66. * denotes non-stock item. Please allow 1 week manufacturing time.

JAW NUTS & SCREWS



MADE IN THE USA



FREE SCREWS!
2 High Grade Socket Head Cap Screws Provided With Each Jaw Nut!



Kitagawa	MMK Matsumoto	Chuck Size	Critical Dimensions						2 Screws Included With Each Jaw Nut				
			Heel Height H	Groove Width G	Screw Size Pitch & Length E	Hole Space D	Hght Inch A	Width Inch C	Length Inch B	Jaw Nut Part Number	Price Each	Screw Part Number	Price Each
-	-	6	0.295	0.432 (11mm)	M10-1.60x30mm	0.787 (20mm)	0.847	0.669	1.460	HO-62JN	26.50	M1016030	1.50
-	Z-6,ZA5-6-0, ZA5-6B,ZJA5-6	6	0.295	0.432 (11mm)	M8-1.25x30mm	0.984 (25mm)	0.790	0.690	1.570	SG-60JN	26.50	M0812530	1.25
B-206,BT-206, BB-06,B-07,B-106	-	6	0.295	0.472 (12mm)	M10-1.60x30mm	0.787 (20mm)	0.728	0.689	1.417	KT-60JN	26.50	M1016030	1.50
B-06	-	6	0.295	0.472 (12mm)	M10-1.60x30mm	0.787 (20mm)	0.885	0.689	1.440	KT-61JN	26.50	M1016030	1.50

For Jaw Nuts Without Screws, Please See Page 45.

Call Us Or Visit Our Website For Our Complete Selection!

Soft, Round & Hard Jaws

5C, 16C, CHICK Collet Chucks

Precision ER Collets Coolant & Tapping

Drill Chucks Tapping Equip

Spade Drills HSS/Carbide Inserts

Carbide Tools Micro 100

Knurling Tools Bandsaw Blades

Flat Stock/Drill Rod Tooling Components