

WISE SOFT JAWS

C

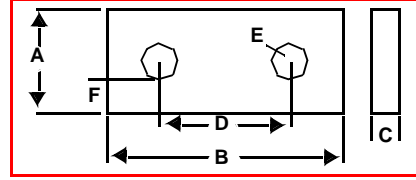
WISE JAWS ALUMINUM AND STEEL For Precision Machine Vises

FEATURES:

- Fits Kurt Anglock and similar precision machine vises.
- Perfect for easy and quick set-ups, reducing down time.
- Customize jaws for drill or mill features.
- Reusable, saving you time and money!
- Price is for set of 2 jaws.



QUANTITY DISCOUNTS!
Buy 10 or More Sets
(In Any Combination)
& Take An Additional
10% OFF!



Vise Size	A Height Inch	B Length Inch	D Hole Space	E Screw Size	F Hole Dist.	C Width Inch	STEEL		ALUMINUM	
							Part Number	Price Set of 2	Part Number	Price Set of 2
4"	1-3/4	4	2-1/2	3/8	.687	3/4	VJ-451	\$12.23	VJ-401	\$9.78
	2	4	2-1/2	3/8	.687	1	VJ-452	\$14.36	VJ-402	\$11.17
6"	2	6	3-7/8	1/2	.937	3/4	VJ-651	\$14.58	VJ-601	\$11.22
						1	VJ-652	\$16.90	VJ-602	\$12.45
						1-1/4	VJ-653	\$20.38	VJ-603	\$14.73
						1-1/2	VJ-654	\$26.09	VJ-604	\$18.10
						2	VJ-656	\$29.87	VJ-606	\$20.57
						1	VJ-659	\$35.53	VJ-609	\$22.60
	12	3-7/8	1/2	.937	1-1/4	VJ-660	\$41.77	VJ-610	\$27.66	
					1	VJ-661	\$26.09	VJ-611	\$19.68	
	3	6	3-7/8	1/2	.937	2	VJ-657	\$36.77	VJ-607	\$29.14
						1	VJ-662	\$33.01	VJ-612	\$25.18
	4	6	3-7/8	1/2	.937	1-1/2	VJ-655	\$40.83	VJ-605	\$27.54
						2	VJ-658	\$48.41	VJ-608	\$32.40
8"	2-1/2	8	4-3/4	5/8	1.220	1	VJ-851	\$27.46	VJ-801	\$18.19
						1-1/4	VJ-852	\$34.65	VJ-802	\$25.03

STEEL Vise Jaws are made from C1018 Cold Roll Steel and can be hardened. ALUMINUM Vise Jaws are made from 6061-T6 Bar Stock.

MACHINE VISES

Two 4 x 6"
Wide Openings



FEATURES:

- 6" Jaw opening
- Bed height of 3.125"
- 2 Jaw openings! 4" x 6" each
- Lifetime Warranty



6" Double MAG

Double The Number Of Parts Per Run!
Twice As Many Stations With One Vise!



Part Number
CON-VI6DOUBLE

\$1066⁶⁷

MACHINE VISES



FEATURES:

- 5" Full length opening
- Bed height of 2.500"
- Flame hardened vise bed
- Ideal for 90% of your work!



5" Jaw Width
5" Opening

Smaller Size Allows More Work
Stations On CNC Machines!

Part Number
CON-VI5MINI

\$473³³



6" MACHINE VISES

Value Priced!

FREE VISE JAWS!
Receive 1 Set of VJ-602
Vise Jaws **FREE** With Any
Vise Purchase From
KURT, Magnum
or GS Tooling!



FEATURES:

- GS-750 features a 7.5" opening
- GS-890 features an 8.9" opening
- 4 jaw plate positions allow extra capacity with the jaw plates in the outside position
- Chip cover protects lead screw from damage
- Compatible with standard vise jaws
- Swivel base is graduated 360° in one degree increments



Vise Size	Vise Opening	Part Number	Price Each
6"	7.5"	SOWA-327-275	\$259.00
	8.9"	SOWA-327-290	\$299.00
Swivel Base		SOWA-327-280	\$99.00



MACHINE VISES

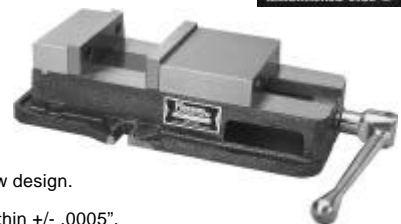


Lifetime Warranty
On Workmanship
& Manufacturing!



FEATURES:

- Non-lifting moveable jaw design.
- 6" (152mm) jaw width.
- Bed Height is 2.875" within +/- .0005".
- Supplied with a removable chip shield.
- Stress relieved iron vise body.
- All machined surfaces are square and parallel within .001" (.025mm).
- 80 lb. shipping weight.



6" Jaw Width
8" Opening

Vise Size	Vise Opening	Part Number	Price Each
6"	8"	CON-VI6MAG	\$393.33
Swivel Base		CON-VI-EV1012	\$280.00
Handle (complete)		CON-VIEV1050	\$84.00



Call Us Or Visit Our Website For Our Complete Selection!

Soft, Round
& Hard Jaws

5C, 16C, CHICK
Collet Chucks

Precision ER Collets
Coolant & Tapping

Drill Chucks
Tapping Equip

Spade Drills
HSS/Carbide Inserts

Carbide Tools
Micro 100

Knurling Tools
Bandsaw Blades

Flat Stock/Drill Rod
Tooling Components