

ROUND JAWS- 3.0 mm x 60° Serrations

For Use On: **MMK Matsumoto, Howa & Other Chucks**

Chuck Jaws
Jaw Nuts

Power Chucks
KURT Vises

Retention Knobs
ER,DA,TG,AF Collets

Balanced Toolholders
VDI/Lathe Bushings

Indexable Drills
Turning & Boring

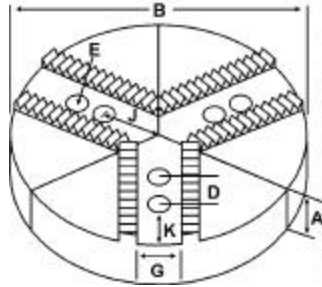
Endmills
Carbide & HSS

Drills & Taps
Reamers/Broaches

Measuring Tools
Abrasives



Group



WARNING!
Make sure that you are looking for jaws with **3.0mm x 60°** serrations. Jaws using **1.5mm x 60°** serrations can be found on pages **10-21**.

- Round Jaws allow for complete gripping of workpiece.
- Oversized jaws available.
- Ideal for thin-walled or irregular shaped workpieces.
- Can be machined to fit workpiece.
- Available in Aluminum, Cast Iron & Steel.
- Made in the USA.
- Max. length of serrations: 5.75"

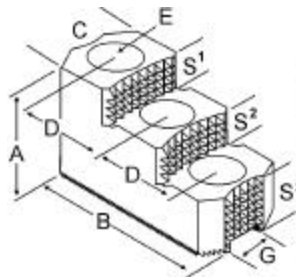


Group No.	Chuck Size	Critical Dimensions			Hole to Front J	Pie Dia B	Hght Inch A	No. of Holes	ALUMINUM		CAST IRON		STEEL	
		Groove Width G	Screw Size E	Hole Space D					Part Number	Price Set Of 3	Part Number	Price Set Of 3	Part Number	Price Set Of 3
K3-12-20	6	0.472 (12mm)	10mm	0.787 (20mm)	1.375	6	2.00	2	RH3-6200A	69.10	RH3-6200CI	89.60	RH3-6200S	161.92
H-6,HA5-6							4.00	2	RH3-6400A	108.34	-	-	-	-
K3-14-25	8	0.551 (14mm)	12mm	0.985 (25mm)	2.250	8	2.00	2	RH3-8200A	96.32	RH3-8200CI	115.20	RH3-8200S	235.52
MMK HJ-08							4.00	2	RH3-8400A	130.77	RH3-8400CI	217.59	-	-
HOWA HO1MA8							10	2.00	2	10-RH3-8200A	136.45	-	-	-
K3-15-30	10	0.591 (15mm)	12mm	1.181 (30mm)	2.375	10	2.00	2	RH3-10204A	136.45	RH3-10204CI	172.80	-	-
							4.00	2	RH3-10404A	210.47	-	-	-	-
K3-16-30	10	0.630 (16mm)	12mm	1.181 (30mm)	2.375	10	2.00	2	RH3-10200A	120.78	RH3-10200CI	172.80	RH3-10200S	338.55
MMK HW-10, HW-12							4.00	2	RH3-10400A	187.42	-	-	-	-
							5.00	2	RH3-10500A*	280.05	-	-	-	-
HOWA HO1MA10							12	2.50	2	12-RH3-10250A*	220.64	-	-	-
							4.00	2	12-RH3-10400A*	351.92	-	-	-	-
ATLAS PAF10, PAF12							15	2.50	2	15-RH3-10250A*	392.31	-	-	-
K3-18-30	12	0.709 (18mm)	14mm	1.181 (30mm)	3.625	12	2.00	2	RH3-12200A	177.32	RH3-12200CI	255.99	-	-
HOWA HO1MA12							2.50	2	RH3-12250A	220.64	-	-	-	-
							3.00	2	RH3-12300A	247.46	-	-	-	-
							4.00	2	RH3-12400A	306.48	-	-	-	-
							5.00	2	RH3-12500A	392.41	-	-	-	-
	15	2.50	2	15-RH3-12250A*	392.31	-	-	-	-					

Round Jaw Material: ALUMINUM-6061-T6 Bar Stock, CAST IRON-Gray, STEEL-1018. 18" & Larger- Aluminum Casting T6
For complete list of applicable chucks, see pages 54-66. * denotes non-stock item. Please allow 1 week manufacturing time.

HARD JAWS

WARNING!
Make sure that you are looking for jaws with **3.0mm x 60°** serrations. Jaws using **1.5mm x 60°** serrations can be found on pages **10-21**.



- Designed for first operation roughing, standard runout between 0.005-0.010
- 1 & 2 step jaws available.
- Reversible-suitable for OD & ID workholding.
- OEM Style have ground tips and provide improved runout.
- Extra Bite have conical teeth for extra gripping power and black oxide for long life. Made in the USA.



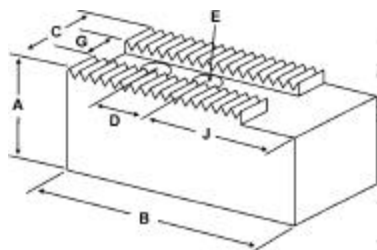
Group No.	MMK Matsumoto	Howa	Chuck Size	Critical Dimensions			Width Inch C	Length Inch B	Hght Inch A	No. of Holes	No. of Steps	Step Height S1	Step Height S2	Step Height S3	Part Number	Price Set Of 3
				Groove Width G	Screw Size E	Hole Space D										
K3-16-30	HW-10, HW-12	HO1MA10	10	0.630 (16mm)	12mm	1.181 (30mm)	1.75	4.250	2.500	3	2	0.650	1.150	0.700	H3-100HJ2	\$666.79
K3-18-30	-	HO1MA12	12	0.710 (18mm)	14mm	1.181 (30mm)	1.75	4.875	2.500	3	2	0.650	1.150	0.700	H3-120HJ2	\$746.17

Call Us Today For All Of Your Machine Tool Needs!

SOFT JAWS- 3.0 mm x 60° Serrations

For Use On: MMK Matsumoto, Howa & Other Chucks

C



WARNING!
Make sure that you are looking for jaws with **3.0mm x 60°** serrations. Jaws using **1.5mm x 60°** serrations can be found on pages **10-21**.

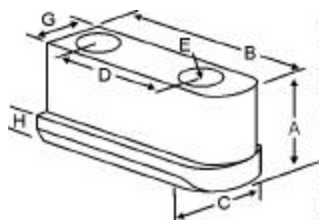


QUANTITY DISCOUNTS!
Order **5 SETS OR MORE** of the same part number soft jaws and receive a **5% DISCOUNT!**

Group No.	Chuck Size	Critical Dimensions				ALUMINUM				STEEL			
		Groove Width G	Screw Size E	Hole Space D	Hole to Front J	Width Inch C	Length Inch B	Hght Inch A	No. of Holes	FLAT END Part Number	Price Set Of 3	FLAT END Part Number	Price Set Of 3
K3-12-20	6	0.472 (12mm)	10mm	0.787 (20mm)	1.375	1.250	2.750	1.50	2	H3-6150AF	37.74	H3-6150F	40.58
H-6, HA5-6 HO1MA6								2.50	2	H3-6250AF	52.08	H3-6250F	55.88
K3-14-25	8	0.551 (14mm)	12mm	0.985 (25mm)	2.000	1.500	3.750	2.00	2	H3-8200AF	50.14	H3-8200F	53.58
HJ-08 HO1MA8								4.00	2	H3-8400AF	66.41	H3-8400F	70.41
K3-15-30	10 to 12	0.591 (15mm)	12mm	1.181 (30mm)	2.625	1.500	4.750	2.00	2	H3-10204AF	54.57	H3-10204F	58.18
								4.00	2	H3-10404AF	72.46	H3-10404F	76.56
K3-16-30	10 to 12	0.630 (16mm)	12mm	1.181 (30mm)	2.625	1.500	4.750	2.00	2	H3-10200AF	54.57	H3-10200F	58.18
HW-10, HW-12 HO1MA10								4.00	2	H3-10400AF	72.46	H3-10400F	76.56
K3-18-30	10 to 14	0.709 (18mm)	14mm	1.181 (30mm)	3.125	2.000	5.500	2.50	2	H3-12250AF	72.39	H3-12250F	76.56
HO1MA12								4.00	2	H3-12400AF	94.67	H3-12400F	99.51

For "Pointed" Soft Jaws, please substitute "P" for "F" in the part number. Example: H3-6150AF will be H3-6150AP
For Pointed Jaws: Up to 10" add \$3.25, 12" and over add \$6.50
Soft Jaw Material: ALUMINUM-6061-T6 Bar Stock, STEEL-1018, "B" JAWS-7075-T6 Aircraft Aluminum
For complete list of applicable chucks, see pages 54-66. * denotes non-stock item. Please allow 1 week manufacturing time.

JAW NUTS & SCREWS



FREE SCREWS!
2 High Grade Socket Head Cap Screws Provided With Each Jaw Nut!



MMK Matsumoto	Howa	Critical Dimensions						2 Screws Included With Each Jaw Nut				
		Heel Height H	Groove Width G	Screw Size E	Hole Space D	Hght Inch A	Width Inch C	Length Inch B	Jaw Nut Part Number	Price Each	Screw Part Number	Price Each
HO15M6, HO1MA6, HO22M6, HO24M6, HO27M6, HO34M6	HJ-06	0.295	0.472 (12mm)	M10-1.60 x 30mm	0.787 (20mm)	0.847	0.669	1.460	H3-60JN	26.50	M1016030	1.50
-	-	0.340	0.628 (16mm)	M12-1.75 x 35mm	1.181 (30mm)	1.000	0.910	2.000	H3-100JN	51.54	M1217535	1.50

JAW BORING RING

No need to look all over the shop for a setup piece and waste time. Our jaw boring ring is essential for boring Soft Jaws and Round Jaws.



- FEATURES:**
- Ideal for machining soft jaws.
 - Attaches quickly without tools.
 - Applies equal pressure on all jaws.
 - Attaches to front of jaws, compensating for "jaw lift."
 - Since no discs or bungs are used to clamp jaws, through boring of jaws is possible.



Jaw Boring Ring (comes complete with 3 pin assemblies)

Chuck Dia	ID Inch	OD Inch	Pin Depth	Pin Dia	Part Number	Price Each
6"	3.250	6.825	0.350"	0.512"	JBR-06	\$170.60
8"	3.500	8.450	0.350"	0.562"	JBR-08	\$209.70
10"	5.900	10.150	0.350"	0.709"	JBR-10	\$236.73
12"	7.475	12.075	0.400"	0.709"	JBR-12	\$263.18
15"	8.900	15.230	0.600"	0.938"	JBR-15	\$395.43

Extra Pin Assemblies

Pin Depth Inch	Pin Dia. Inch	Indiv. Pins Part Number	Price Each	Pins-Set of 3 Part Number	Price Each
0.350"	0.512"	JBR-PIN-06	\$16.50	JBR-PIN-06-SET3	\$65.48
0.350"	0.562"	JBR-PIN-08	\$16.50	JBR-PIN-08-SET3	\$65.48
0.350"	0.709"	JBR-PIN-10	\$16.50	JBR-PIN-10-SET3	\$65.48
0.400"	0.709"	JBR-PIN-12	\$16.50	JBR-PIN-12-SET3	\$65.48
0.600"	0.938"	JBR-PIN-15	\$16.50	JBR-PIN-15-SET3	\$65.48

Call Us Or Visit Our Website For Our Complete Selection!

Soft, Round & Hard Jaws

5C, 16C, CHICK Collet Chucks

Precision ER Collets Coolant & Tapping

Drill Chucks Tapping Equip

Spade Drills HSS/Carbide Inserts

Carbide Tools Micro 100

Knurling Tools Bandsaw Blades

Flat Stock/Drill Rod Tooling Components